

※NOTES※

MECHANICAL

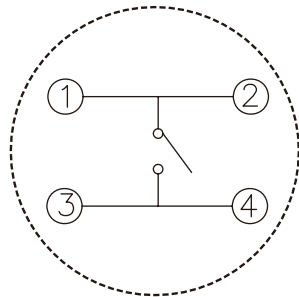
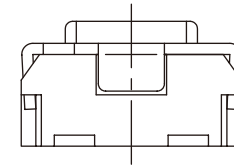
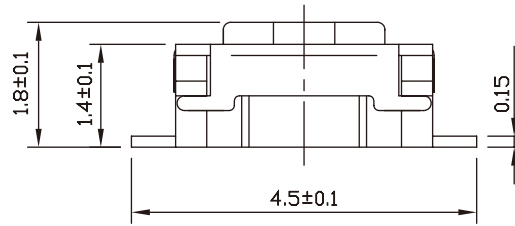
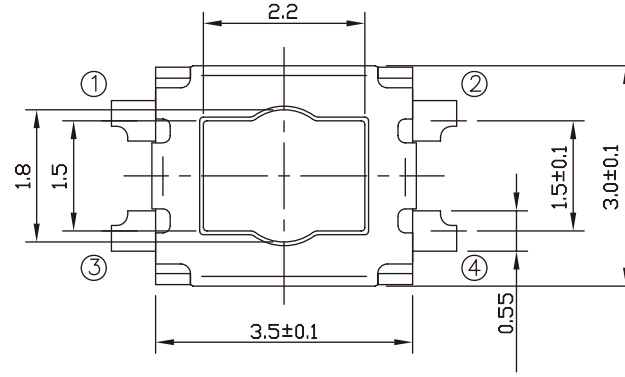
- ① HOUSING : THERMOPLASTIC L.C.P., COLOR BLACK
- ② BUTTON : THERMOPLASTIC L.C.P., COLOR BLACK
- ③ CONTACT SPRING : SUS, SILVER PLATED
- ④ SOLDER TAIL : PHOSPHOR BRONZE, SILVER PLATED

SPECIFICATION

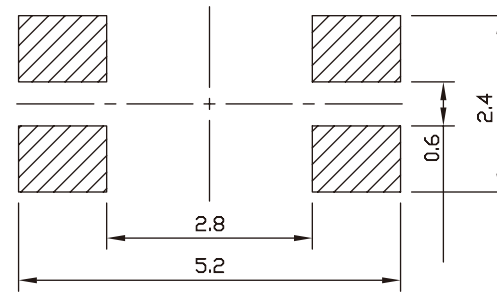
- ① RATING : DC 32VDC, 50mA
- ② CONTACT RESISTANCE : 500mΩ MAX.
- ③ INSULATION RESISTANCE : 100MΩ MIN.
- ④ OPERATING FORCE : 300±50gf
- ⑤ OPERATING LIFE : 150,000 CYCLES
- ⑥ OPERATING TEMPERATURE : -40°C TO +85°C

※※ SOLDERING PROCESS MUST FOLLOWING :
INFRARED REFLOW SOLDERING IN ACCORDANCE WITH
IEC61760-1.

※※ TRAVEL 0.25±0.1mm



SCHEMATIC



RECOMMENDED P.C.B. LAYOUT
(TOP VIEW)

<small>QUALITY CONTROL LINE EVIDENCE WILL MARKED THE SYMBOL AS ▲</small> <small>RoHS</small> <small>HIP</small> <small>LEAD-FREE</small>	METRIC	WIROS Electronics Int'l CO., Ltd.										
	<small>DRAWER</small>	YD, LEE										
	<small>APPROVER</small>	TAI, YU										
	<small>DIMENSIONS ARE IN MILLIMETERS TOLERANCES</small>	<table style="width: 100%; border-collapse: collapse;"> <tr><td>X.</td><td>----</td></tr> <tr><td>X.X</td><td>±0.35</td></tr> <tr><td>X.XX</td><td>±0.25</td></tr> <tr><td>X.XXX</td><td>±0.15</td></tr> <tr><td>ANGLES</td><td>±3°</td></tr> </table>		X.	----	X.X	±0.35	X.XX	±0.25	X.XXX	±0.15	ANGLES
X.	----											
X.X	±0.35											
X.XX	±0.25											
X.XXX	±0.15											
ANGLES	±3°											
<small>DO NOT SCALE DRAWINGS</small>		<small>PRODUCT NUMBER</small>										
<small>THIRD ANGLE PROJECTION</small>		SWAFE -1×SR004M7										
<small>SIZE</small>	A4	<small>SCALE</small>	NONE									
<small>REV.</small>		<small>SHEET</small>	1 OF 1									